

Transfer CruiseShark Configuration To Another Computer

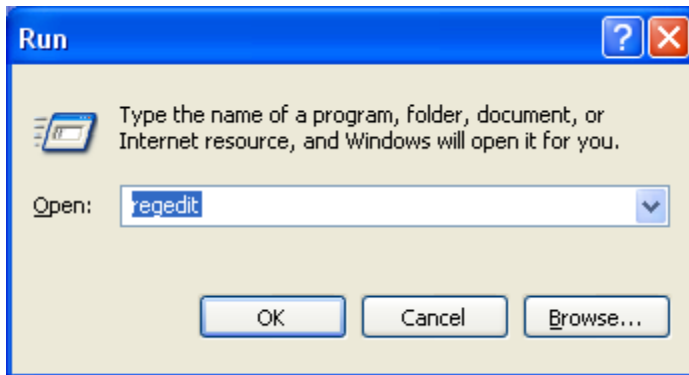
Please read through the entire document before attempting the procedure.

The procedures described herein involve working with the Windows Registry. A Windows Registry includes elements vital to the correct operation of the computer on which it resides and improper or incorrect manipulation of this data may irreparably damage the system. While the procedures described have been tested and should be safe to perform the author makes no claims as to their safety and you use them at your own risk. For added safety you may backup a Windows Registry before altering it. Please visit Microsoft.com to locate instructions for backing up a Registry.

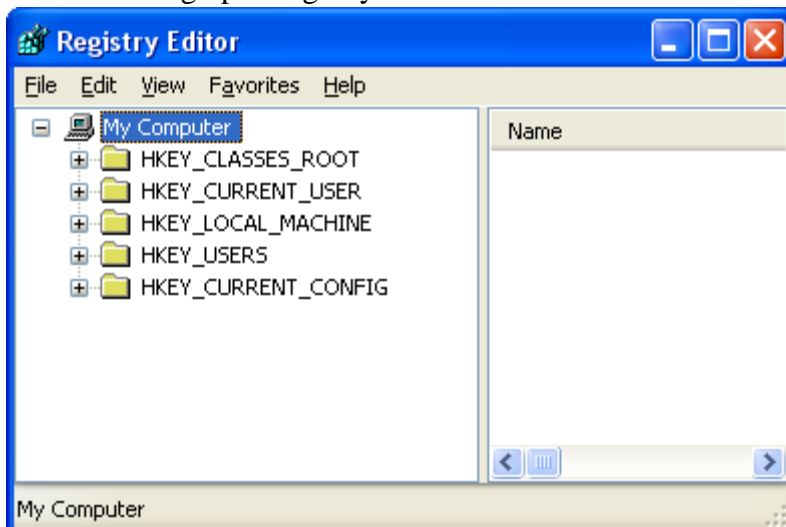
1. **On the computer that has the CruiseShark configuration that you want to move.** Click on the Start button, bottom left corner of your screen.



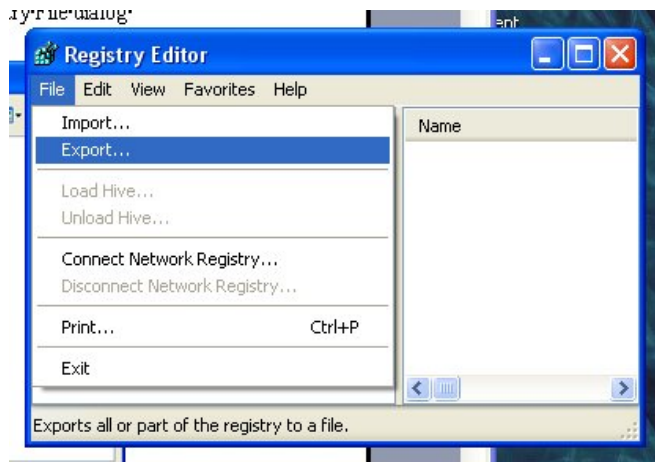
2. Find Run on the menu that pops up and click on it. Usually located in the bottom right area of the menu.
3. This will bring up a small Run dialog. Type "regedit", without the quotes, in the Open field and click OK.



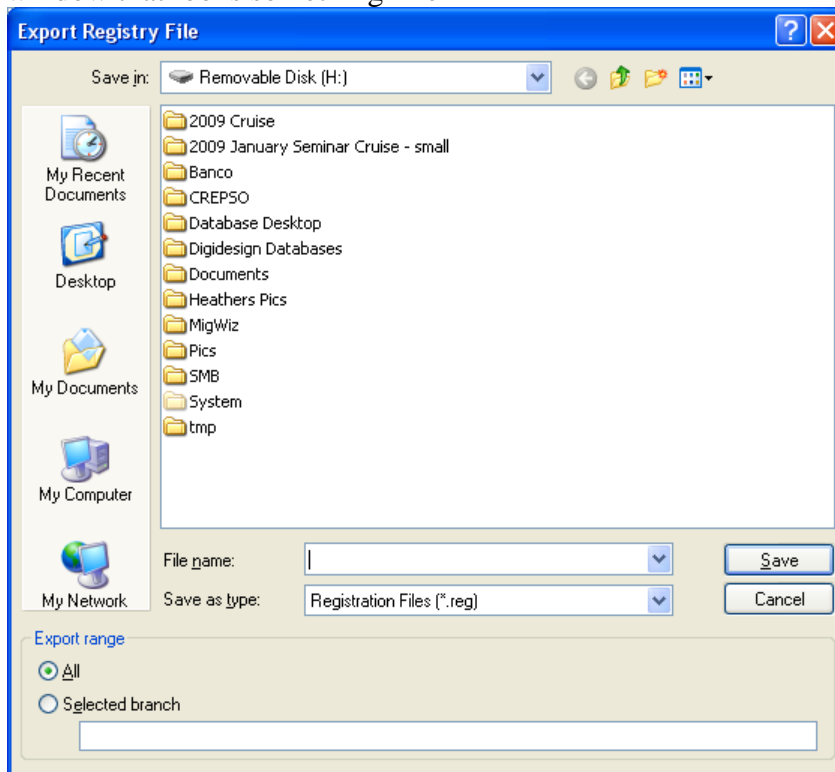
4. This will bring up a Registry Editor window that looks something like



5. Click on File, top left of the window to drop down a menu. Find the Export



selection and click on it. This will bring up an Export Registry File dialog window that looks something like



If you will be using a (USB) memory stick to transfer the information

6. Make sure that the memory stick is inserted in your computer. Click on Save in at the top of the Export dialog window to drop down a list of storage locations. Find the memory stick, likely something like “Removable Disk (H:)” and click on it. The result will look something like the picture above.

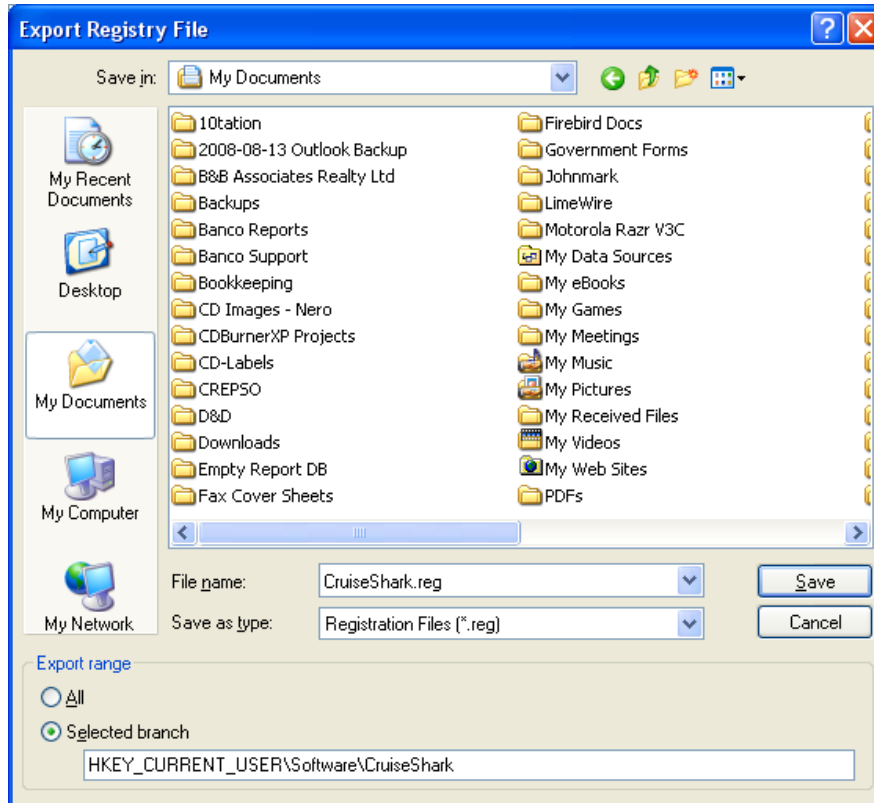
If you will be emailing the information to the other machine

6. Click on My Documents on the left side of the Export dialog window.

For both transfer methods:

7. In File name, at the bottom of the window type in “CruiseShark.reg”, without the quotes.
8. In the field below Selected branch type in “HKEY_CURRENT_USER\Software\CruiseShark”, without the quotes.

Note: this will move the entire CruiseShark configuration. If you just want to move the cruises that you are monitoring type in “HKEY_CURRENT_USER\Software\CruiseShark\Items”, without the quotes.



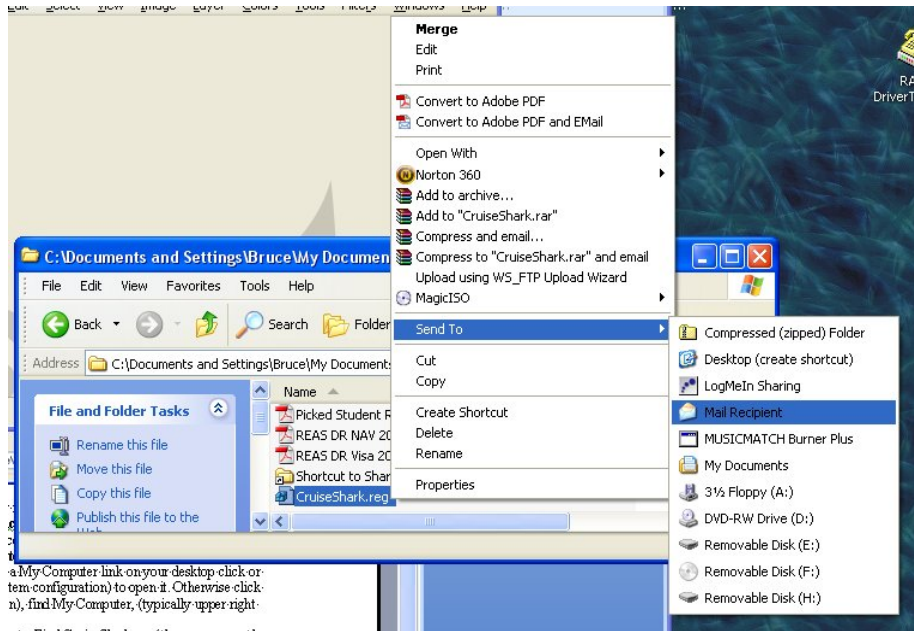
9. Click on the Save button, lower right area of window.
10. When the Registry Editor window reappears, close it (click x in top right corner of window or File | Exit).

If you will be using a (USB) memory stick to transfer the information

11. Perform whatever procedure is necessary to safely remove the memory stick.

If you will be emailing the information to the other machine

11. Open My Computer – If you have a My Computer link on your desktop click or double-click (depends on your system configuration) to open it. Otherwise click on Start (lower left corner of screen), find My Computer, (typically upper right area of menu), and click on it.
12. Open (*your username*) Documents (click or double click on it). Find CruiseShark.reg (the .reg may not be displayed, depending on your configuration) place the mouse cursor over “CruiseShark” and click the right mouse button to pop up a context menu. On this menu highlight Send To which will display a sub-menu. Find Mail Recipient and click (left click) on it.



13. This will bring up your mail client and a new email form with the file attached. Complete the email and Send it. Close (or minimize) your mail client and close the My Computer window.

Note: Some email clients will not allow you to send a .reg email attachment in this manner. In which case you should try creating a new email from within your email client (e.g. Outlook, Outlook Express, etc.) and attaching the CruiseShark.reg file in My Documents. You may still not be able to send this attachment as is and in some cases the attachment may be stripped by the receiving computer. To get around this you will have to rename the file before attaching it to an email and then rename it back after saving the attachment on the other computer – use something like CruiseShark.txt as the temporary name.

1. On the computer to which you are transferring a CruiseShark configuration.

If you will be using a (USB) memory stick to transfer the information

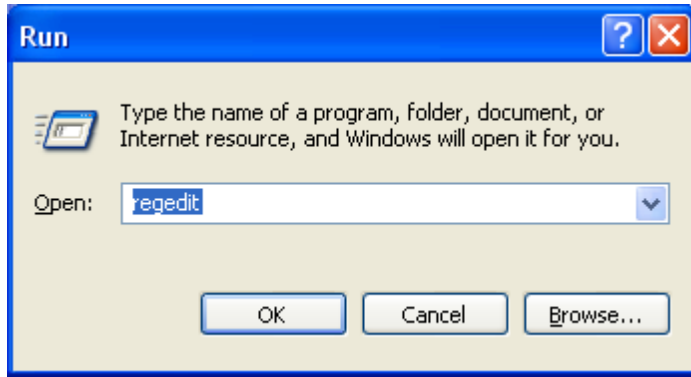
2. Insert the memory stick in the computer.

If you will be emailing the information to the other machine

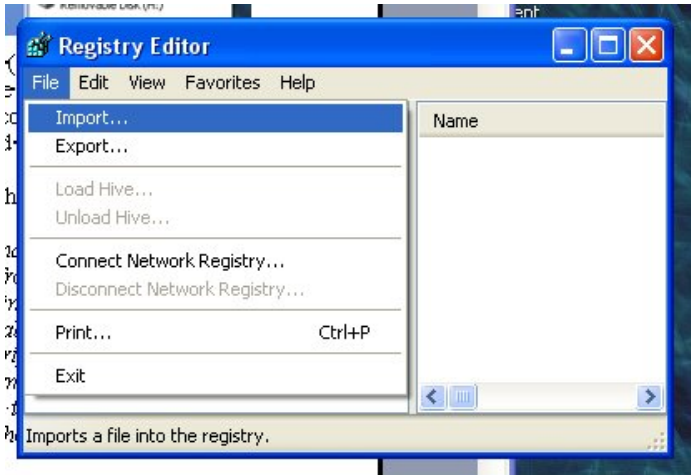
2. Open your email client, find the email that you sent from the other computer and open it. Save the attachment to My Documents. (If you had to rename the file before sending it, after you save the attachment you will have to rename the saved version back to CruiseShark.reg.)

For both transfer methods:

3. Click on your Start button, lower left corner of screen. Find Run and click on it. In the Run dialog that pops up, type “regedit”, without the quotes, in the Open field and click OK.

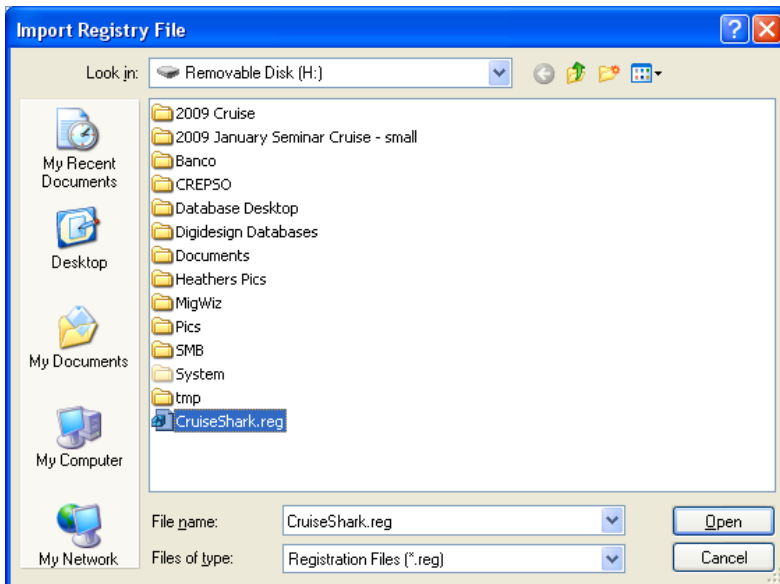


4. When the Registry Editor window appears click on File | Import. This will bring up an Import Registry File dialog window.



If you will be using a (USB) memory stick to transfer the information

5. Click on Look in and find your memory stick in the list that drops down. Once the contents of the stick are listed find CruiseShark.reg and click on it. Depending on your configuration you might then have to click the Open button.

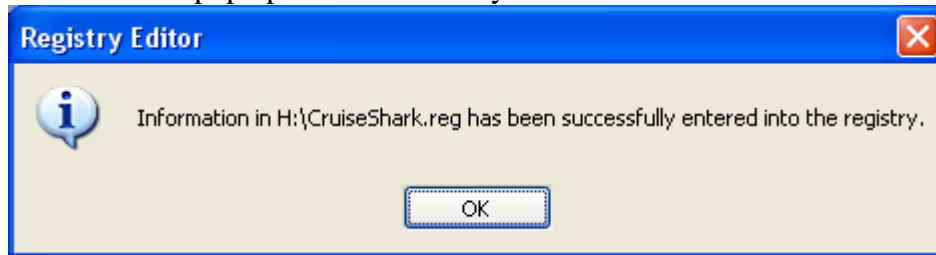


If you will be emailing the information to the other machine

5. Click on the My Documents button on the left side of the dialog. Find CruiseShark.reg and click on it. Depending on your configuration you might then have to click the Open button.

For both transfer methods:

6. Presuming everything works correctly you should then have a message similar to the one below pop up in the center of your screen.



7. Close the Registry Editor window. That's it, you are done. Open CruiseShark to verify this.

Vista Users:

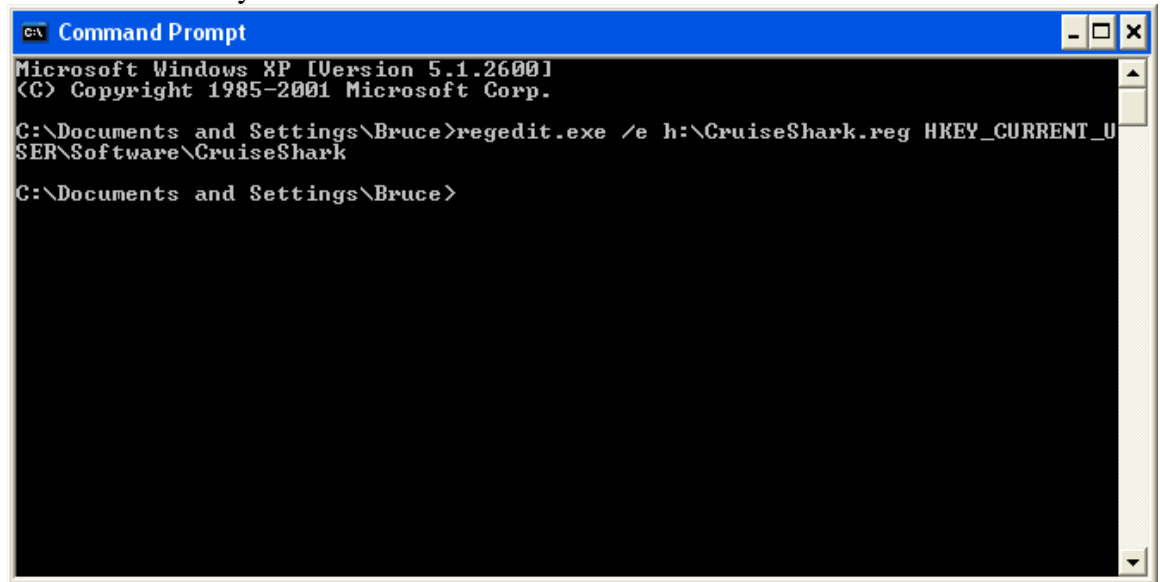
- Depending on your configuration Vista may, at various times, ask you to confirm that you want to permit a system level operation. While completing the steps in this document, when your screen darkens and a confirmation dialog pops up click on the appropriate button to permit (continue) with the action.

General Notes:

- CruiseShark should be installed on the computer to which you are copying the information before you copy the data.
- You will likely need Administrator access on the computer to which you are moving your CruiseShark information. You may also require this level of access on the computer from which you are moving the data.
- There are a large number of ways in which a Windows environment can be configured. Some of the illustrations may differ from those that you see. The snapshots were taken on a computer running Windows XP Professional. Even if you are running the same version of Windows, your configuration may be slightly different and keystrokes / mouse actions and screen presentations may differ.
- There is a method that some might find simpler for exporting and importing the CruiseShark registry entries. It is less involved but it's also less visual and may be more prone to error. The procedure is as follows:
 1. Open a DOS (Command) window – Start | All Programs | Accessories | Command Prompt. Presuming a memory stick in drive H:, type in the following at the prompt. The "o" should be typed as a SPACE and the text must be entered exactly as shown below (character case does not matter)

```
regedit.exe ° /e ° h:\CruiseShark.reg ° HKEY_CURRENT_USER\  
Software\CruiseShark
```

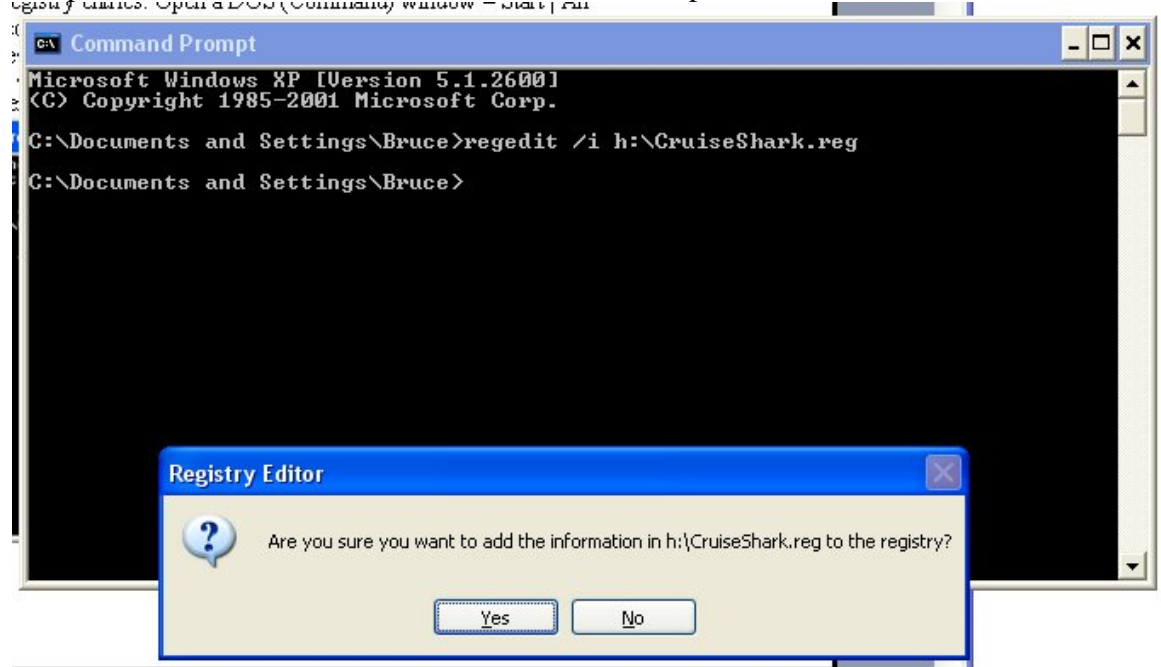
Press the Enter key.



2. On the machine to which the information is to be copied open a DOS (Command) window and, presuming that the memory stick is in H: type in the following at the prompt (as with the previous text, "°" should be typed as a space):

```
regedit.exe °/i °h:\CruiseShark.reg
```

and press Enter. You will be asked to confirm the import, do so.



This procedure is described using a (USB) memory stick to transfer the data. The email version involves placing the file in some known location and then attaching it to an email that is sent to the other machine. (When typing in file names that include embedded spaces, the entire file name must be enclosed in double quotes, e.g. "C:\Documents °and °Settings\Bruce\CruiseShark.reg".)