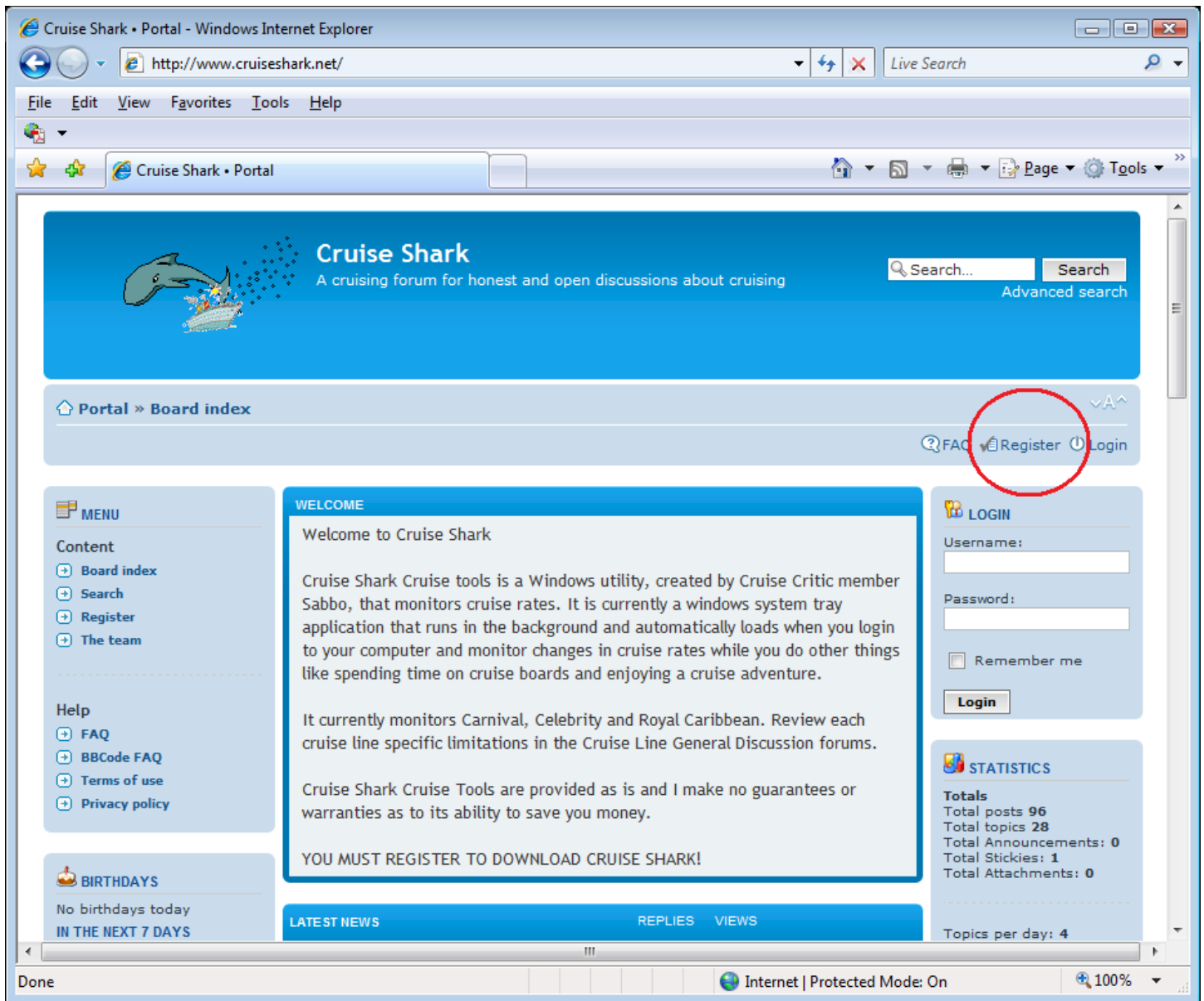


Cruise Shark Installation and Configuration Tutorial

The following tutorial will assist new and current users in the installation process for Cruise Shark.



INSTALLATION – Step 1

To begin the Cruise Shark installation process, you must first access the Cruise Shark portal by opening <http://www.cruiseshark.net> in your browser. To access the Cruise Shark download area, you must first be a registered portal user. This can be completed by clicking on the Register option as show above and completing the registration screens. You will receive an email to complete the registration process.

If you are already a Cruise Shark member, login using your username and password.

Cruise Shark Installation and Configuration Tutorial

No birthdays today
IN THE NEXT 7 DAYS

No members have a birthday within this period of time.

CLOCK

Board3

SEARCH

Search...

Posts

Go

Advanced search

LINK TO US

	REPLIES	VIEWS	LAST POST
New Version 0.18.1 Available Posted by Sabbo » Fri Apr 24, 2009 8:46 pm Forum: News	0	192	by Sabbo » Fri Apr 24, 2009 8:46 pm
Cruise Shark Launches New Portal Posted by Administrator » Thu Apr 23, 2009 10:23 am Forum: News	0	91	by Administrator » Thu Apr 23, 2009 10:23 am

View unanswered posts • View new posts • View active topics

Mark forums read

CRUISE SHARK CRUISE TOOLS	TOPICS	POSTS	LAST POST
DOWNLOAD - You must be registered and login to download! You can download the latest version of Cruise Shark Cruise Tools here.	0	0	No posts
DONATIONS - Help keep Cruise Shark alive - Make a donation today. Though you are free to use Cruise Shark without paying, your financial support is much appreciated. If you have used it and it has saved you money, feel free to show your appreciation. Donation is simple using PayPal!			
Good News - Tell what Cruise Shark has done for you. This is a special area for you to tell everyone what Cruise Shark has done for you. Has it saved you money? Were you able to get a higher category stateroom cheaper? Just want to brag? Tell your	1	4	by Sue L » Sun Apr 26, 2009 2:51 pm

STATISTICS

Totals
Total posts **96**
Total topics **28**
Total Announcements: **0**
Total Stickers: **1**
Total Attachments: **0**

Topics per day: **4**
Posts per day: **13**
Users per day: **55**
Topics per user: **0**
Posts per user: **0**
Posts per topic: **3**

Total members **416**
Our newest member **unberwoob**

INSTALLATION – Step 2

Once you have logged in, you can access the download area by clicking on the link as shown above.

Mark forums read

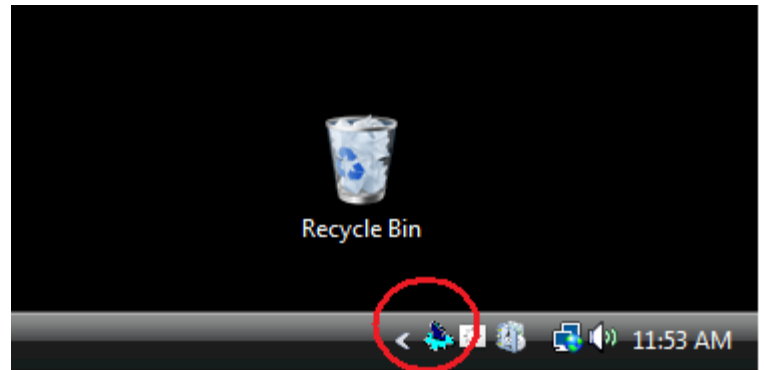
Forum	TOPICS	POSTS	LAST POST
Download latest version of Cruise Shark Cruise Tools (MSI - Microsoft Installer)	Total redirects: 340		
Download latest version of Cruise Shark Cruise Tools (ZIP)	Total redirects: 47		
Download Microsoft .NET Framework 3.5 Service Pack 1 THIS IS REQUIRED TO RUN CRUISE SHARK! It must be installed before running setup. If after downloading and running the Cruise Shark setup you receive a message about .NET 3.5 SP1 being required, download it from this link.	Total redirects: 86		
Current Release History	Total redirects: 37		

INSTALLATION – Step 3

Within the download area you will have multiple choices for download. There is a major required before you can install Cruise Shark. You MUST have Microsoft .NET Framework 3.5 Service Pack 1 installed before you can install Cruise Shark. The easiest way to verify if you have the .NET Framework installed is to download and begin the Cruise Shark installation process by clicking on the desired download option as shown above. The .MSI option will be the best choice for most people. If your firewall does not allow the download of .MSI file types, you can download the ZIP version and extract the MSI file from the ZIP. If you do not meet the .NET Framework requirement, you will be notified during the Cruise Shark setup process at which point you can exit the setup and download and install the Microsoft .NET Framework 3.5 Service Pack1 as shown below.

Cruise Shark Installation and Configuration Tutorial

BEFORE INSTALLING AN UPDATED VERSION OF CRUISE SHARK OVER AN OLDER VERSION, YOU MUST EXIT THE CURRENT RUNNING VERSION OF CRUISE SHARK BY RIGHT-CLICKING THE CRUISE SHARK ICON IN THE SYSTEM TASK BAR AND CLICKING EXIT.



DOWNLOAD - You must be registered and login to download!

Mark forums read

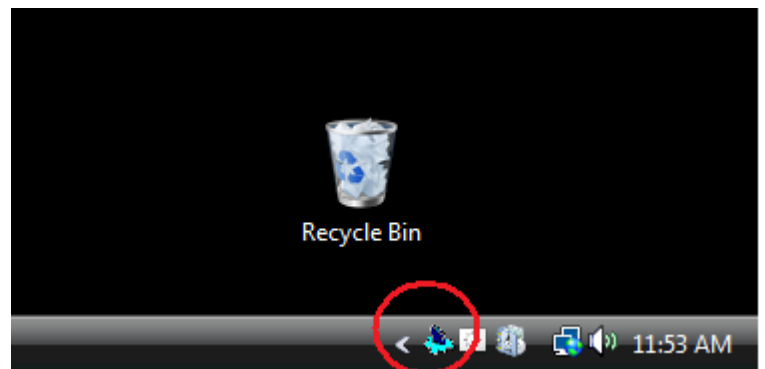
FORUM	TOPICS	POSTS	LAST POST
Download latest version of Cruise Shark Cruise Tools (MSI - Microsoft Installer)		Total redirects: 340	
Download latest version of Cruise Shark Cruise Tools (ZIP)		Total redirects: 47	
Download Microsoft .NET Framework 3.5 Service Pack 1 THIS IS REQUIRED TO RUN CRUISE SHARK! It must be installed before running setup. If after downloading and running the Cruise Shark setup you receive a message about .NET 3.5 SP1 being required, download it from this link.		Total redirects: 86	
Current Release History		Total redirects: 37	

INSTALLATION – Step 4

If your system does not already have the Microsoft .NET Framework 3.5 Service Pack 1 installed, you can download and install it from Microsoft's website by clicking the link as shown above. The .NET Framework is a standard Microsoft installation that is required to run a variety of modern day applications. **THIS DOWNLOAD IS 231MB IN SIZE AND MAY TAKE CONSIDERABLE TIME TO DOWNLOAD AND INSTALL DEPENDING UPON YOUR INTERNET CONNECTION SPEED.**

INSTALLATION – Step 5

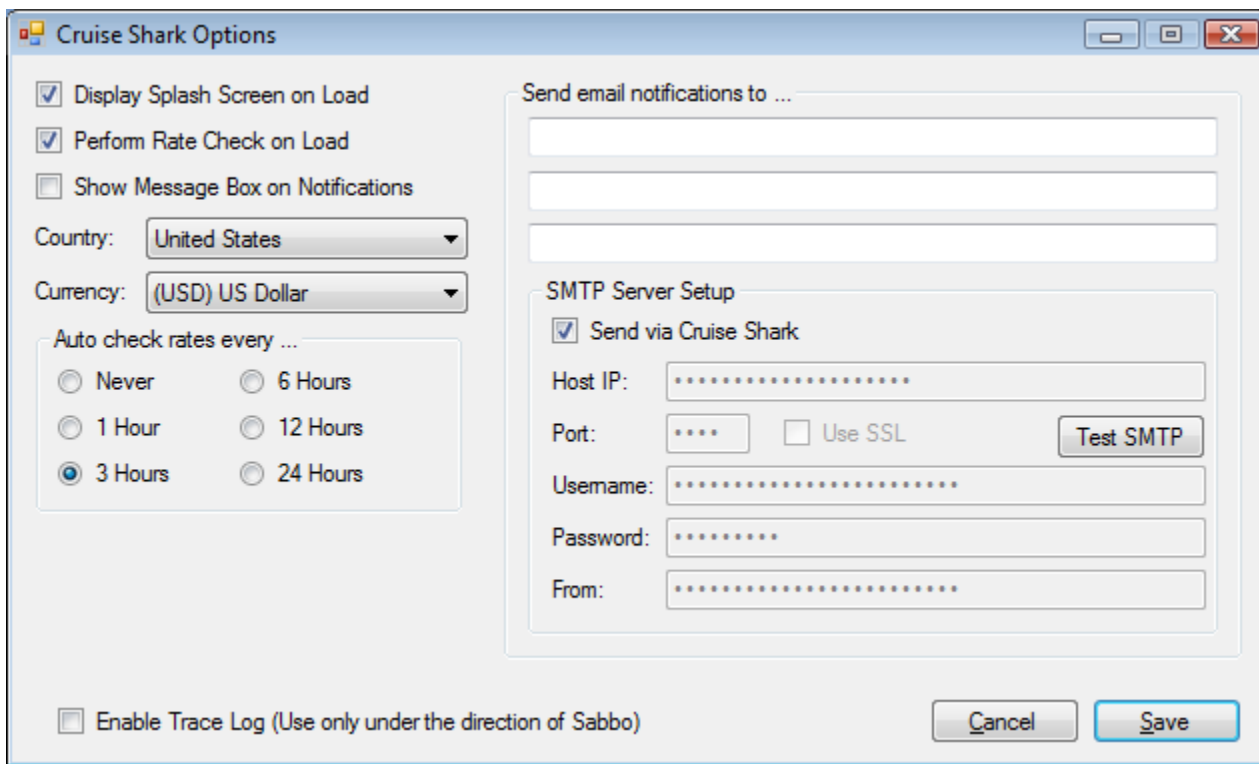
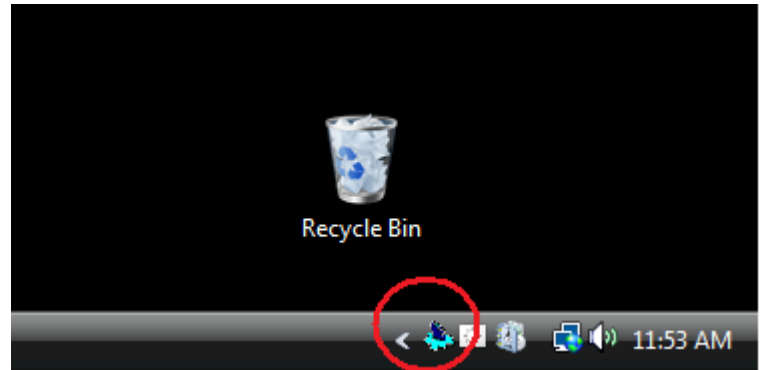
After installation is complete you will see the Cruise Shark icon in the system tray as shown here. Now you can configure Cruise Shark as explained in the next section.



Cruise Shark Installation and Configuration Tutorial

OPTIONS CONFIGURATION

You can configure Cruise Shark's options by double-clicking the Cruise Shark icon in the system tray and clicking the Options button or by right-clicking the Cruise Shark icon in the system tray and clicking Options menu item. Whichever you choose you will receive an options screen similar to the following.



Display Splash Screen on Load

Allows you to enable or display the initial Cruise Shark splash screen.

Perform Rate Check on Load

If check Cruise Shark will perform a check for the most current rates when started. There is a delay of 60 seconds to allow for your internet connection to come available.

Show Message Box on Notifications

If check a message box will appear when there is a rate drop. Unlike the balloon window that will popup above the Cruise Shark system tray icon on alerts and disappear, the message box will remain until you dismiss it.

Country / Currency

Set your default country and currency options.

Cruise Shark Installation and Configuration Tutorial

Auto check rates every y ...

Specify how often you want Cruise Shark to check for rate drops. Be aware that when Cruise Shark check for rate drops, your system will seem slower so choose a setting that is appropriate for you situation. Although a rate check every hour will get you the most current rate more often, it may not be necessary.

Send email notifications to ...

You can enter up to 3 email address where you would like to have notifications sent to when there is a rate drop. Cruise shark uses SMTP to send email and you must configure your SMTP setting for your particular email provider. You can search the internet for popular settings or if you are can't figure it out, check the Send via Cruise Shark to use Cruise Shark SMTP server.

Click the Test SMTP to send a test email message to verify your settings are working correctly.

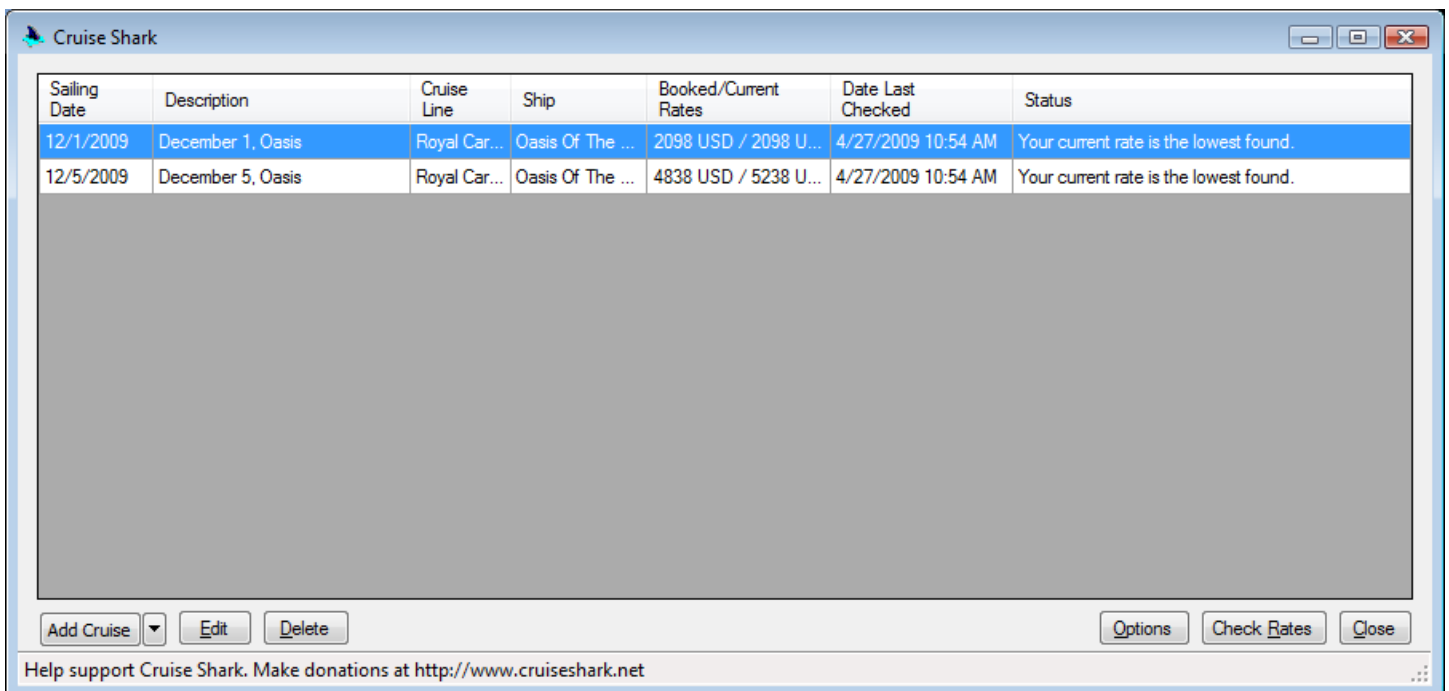
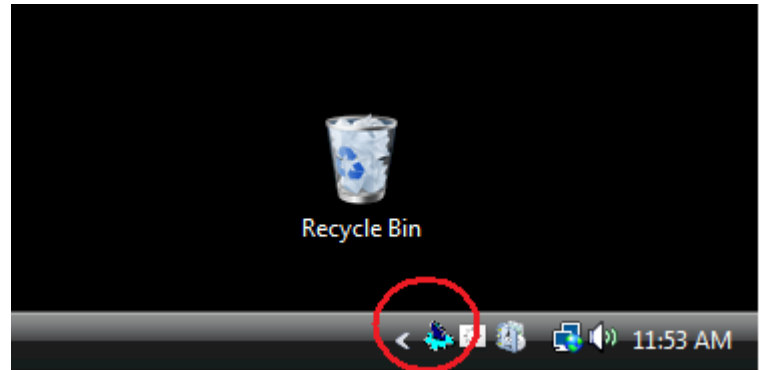
Enable Trace Log (Use only under direction of Sabbo)

This option is used for debugging purposes. This should normally be uncheck as checking it required Cruise Shark to write log information and will slow performance.

Cruise Shark Installation and Configuration Tutorial

CRUISE CONFIGURATION

You can configure Cruise Shark's cruise monitoring information by double-clicking the Cruise Shark icon in the system tray or by right-clicking the Cruise Shark icon in the system tray and clicking Open menu item. Whichever you choose you will receive an options screen similar to the following.



This is the main Cruise Shark window. From here you can Add, Edit or Delete cruise monitor information. You can also set Cruise Shark Options and Check Rates on your current monitored cruises. Simply select the desired option. You can also resize and move the columns and screen as desired.

The status column will show you that current state of your rates or information regarding the cruise being monitored. A line will be shown in RED if there is a rate drop or YELLOW if rates have not been retrieved for that cruise.

Cruise Shark Installation and Configuration Tutorial

Cruise Shark - Royal Caribbean

Country: United States

Currency: (USD) US Dollar

Description: December 1, Oasis

Ship: Oasis Of The Seas

Sail Date: Tuesday, December 01, 2009

Stateroom: [C1] Central Park View W/Balcony Category: C1 Type: Balcony

Number of Adults: 2

Number of Children: 0

Age 55+

U.S. Military or Canadian Forces

Law Enforcement or Fire Department (U.S. Only)

State or province: Tennessee

	1st or 2nd Guest	Stateroom Total
Booked Rate USD:	1,049	2,098
Current Rate USD:	0	0

This screen shows the detailed information about the cruise being monitored. This particular one is for Royal Caribbean, however, other cruise lines are similar in operation.

Country/Currency

Enter desired country and currency. Not all cruise lines have been setup for all countries and currencies and will only show if available.

Description

Enter a description for this cruise monitor. It can be anything you want.

Ship

Select the ship to monitor.

Sail Date

Select the sailing date.

Stateroom

These are common stateroom descriptions which will provide a Category and Type automatically for you. If your particular stateroom is not available you can enter the Category and Type manually.

Cruise Shark Installation and Configuration Tutorial

Category

Enter the Stateroom Category.

Type

Enter the Stateroom Type.

Number of Adults/Children

Enter the number of guest.

Age 55+/U.S. Military or Canadian Forces/law Enforcement or Fire Department/State or province

Select any special rate options that may apply to your booking.

Booked Rate

Enter the rates that you currently have booked. Do not enter any taxes, excursions, port fees, surcharges or other amounts. Only enter the base cruise amount.

Current Rate

This information is supplied by clicking the Check Rate button.

Verify Sailing

Click to verify the ship and sailing date entered is valid.

Check Rate

Click to check return lowest current rate available for the cruise information entered.

Save

Save the booking information into the Cruise Shark database.